



Single Duct Compact VAV Terminal Unit

VAV 3000 Grand-RX

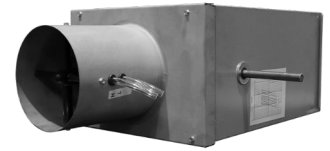
At Gerhman we are driven by a strong desire to continuously generate improvements. We do that by developing products and systems that are easy to use and energy efficient, together with industry-leading knowledge, support, logistics and efficient availability.



gerhman.com

Compact variable air volume control

VAV 3000 Grand-RX



Single Duct Compact VAV Terminal Units feature a compact and versatile design, resulting in a system component with minimal pressure drop, reducing fan horsepower requirements. This design also ensures low noise generation for quiet operation.

Enhanced Flow Control: The inclined opposed blade primary air damper offers more linear flow characteristics compared to the standard butterfly type damper. This ensures more accurate flow control, reducing hysteresis for stable temperature control within the zone.

Versatile Sizing: Available in 12 unit sizes to handle airflows ranging from 100 to 3776 l/s.

Compact Design: Low profile design accommodates tight ceiling spaces.

Field Calibration: Gauge taps provided for easy field calibration and balancing.

Efficient Sealing: Unique blade and jamb seals offer tight closure capabilities while minimizing sound generation.

Durable Construction: Made with 18 SWG (1.2mm thick) zinc-coated steel casing, mechanically sealed for low leakage.

Robust Damper: Features an 18 SWG (1.2mm thick) corrosion-resistant steel inclined opposed blade damper with seals, 45° rotation, and a 13mm diameter plated steel drive shaft. An indicator mark on the end of the shaft shows damper position. Tight close-off with damper leakage less than 2% of nominal flow rate at 750 Pa.

Efficient Connections: Rectangular discharge with flanged duct connection.

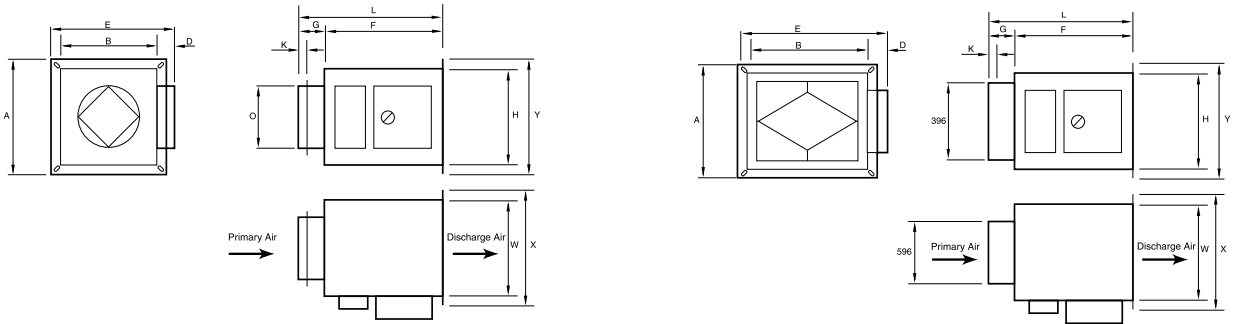
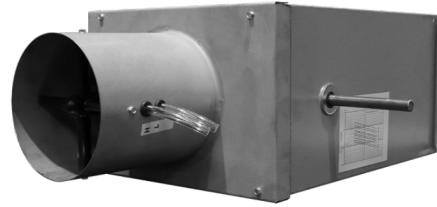
Acoustic/Thermal Lining: The terminal is internally lined with a 25mm thick Melamine-based acoustic/thermally insulating foam with an open cellular structure, non-woven black tissue facing, and compliance with class O fire rating. The material is adhered to all internal surfaces and inside box/channel sections.

Indoor Air Quality: Special Indoor Air Quality linings are available.

Flexible Controls: Right-hand controls location is standard (shown) when looking in the direction of airflow. The damper closes clockwise. Optional left-hand controls mounting is available, with the damper closing counterclockwise.

Air Volume Range

Unit Size	Min l/s	Max l/s
100	30	100
125	40	150
140	50	200
150	55	235
160	60	275
180	75	365
200	90	470
250	150	670
315	240	1035
355	300	1275
400	350	1700
600x400	400	3775



Terminal Size	O mm	A mm	B mm	D mm	E mm	F mm	G mm	K mm	L mm	W mm	H mm	X mm	Y mm	Wgt kg
4-100	96	360	300	100	430	450	150	40	600	300	200	360	260	9.5
5-125	121	360	300	100	430	450	150	40	600	300	200	360	260	9.5
5.5-140	136	360	300	100	430	450	150	40	600	300	200	360	260	9.5
6-150	146	360	300	100	430	450	150	40	600	300	200	360	260	9.5
6.5-160	156	360	300	100	430	450	150	40	600	300	300	360	360	9.5
7-180	176	360	300	100	430	450	150	40	600	300	300	360	360	9.5
8-200	196	360	300	100	430	450	150	40	600	300	300	360	360	12.5
10-250	246	410	350	100	480	450	150	40	600	350	300	410	360	16.5
12-315	311	510	450	100	580	450	150	40	600	450	450	510	510	20.0
14-355	351	510	450	100	580	450	150	40	600	450	450	510	510	20.0
16-400	396	510	450	100	580	450	150	40	600	450	450	510	510	20.0
24x16-600x400	596x396	770	710	100	840	450	150	40	600	710	450	770	510	30.0

Performance data

Discharge Sound Power Levels

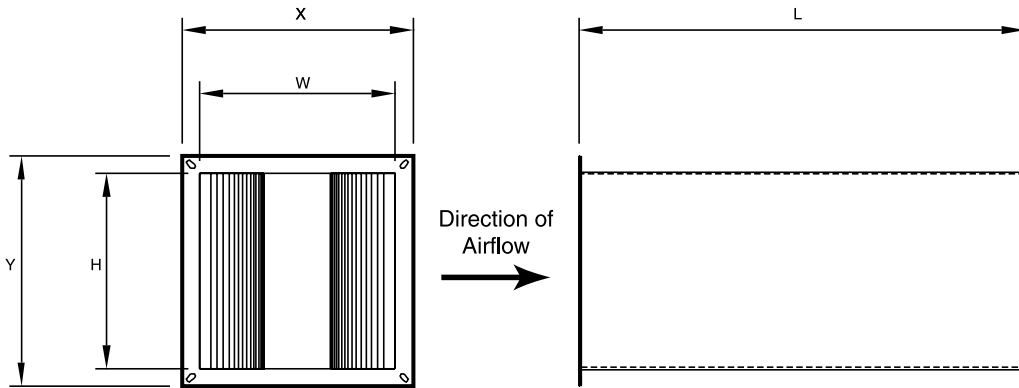
Terminal Size	Air Flow l/s	Min. inlet ΔPs Pa	Fan and 100% Primary Air- Sound Power Octave Bands @ Inlet Pressure Shown																																							
			Min. ΔPs OBCF -Hz.				125 Pa. ΔPs OBCF -Hz.				250Pa ΔPs OBCF -Hz.				375Pa ΔPs OBCF -Hz.				500Pa ΔPs OBCF -Hz.				750Pa ΔPs OBCF -Hz.																			
			125	250	500	1k	2k	4k	125	250	500	1k	2k	4k	125	250	500	1k	2k	4k	125	250	500	1k	2k	4k	125	250	500	1k	2k	4k										
4-100	94	27	* 46	52	57	48	43	52	56	58	57	49	44	58	50	62	59	53	49	59	62	63	61	56	53	60	63	65	63	58	55	59	64	68	67	62	58					
	71	15	* 41	46	49	39	35	51	52	54	50	44	38	55	56	57	55	50	47	57	59	60	58	54	51	56	59	63	62	56	53	55	59	66	70	63	58					
	47	7	* *	37	37	27	*	47	47	47	46	41	35	49	51	55	53	47	43	49	52	60	60	53	48	48	52	62	65	58	53	46	50	61	68	66	60					
	35	2	* *	31	28	*	*	* 45	45	43	37	31	* 46	56	56	49	42	* 46	58	62	56	49	* 45	58	64	62	55	* 45	58	65	66	62										
	24	2	* *	*	*	*	*	* 43	49	48	40	31	* 42	56	60	55	46	* 41	57	63	60	53	* 40	55	58	60	55	* 40	55	59	58	56										
5-125	142	10	48	55	53	57	49	47	55	59	60	59	51	48	47	63	63	61	53	50	60	64	65	64	56	53	62	67	67	65	59	56	62	69	69	67	62	59				
	118	7	* 46	48	51	42	40	53	57	56	55	46	42	56	61	60	58	51	48	64	63	62	61	54	51	64	64	63	61	56	53	59	66	66	65	60	57					
	94	5	* 41	43	44	34	32	51	53	52	50	42	37	54	57	56	54	47	44	56	60	59	57	51	49	56	62	61	60	54	52	57	63	65	55	59	56					
	59	2	* *	32	30	*	*	* 46	45	43	36	31	49	53	52	50	43	40	49	54	58	57	51	46	49	54	60	64	62	55	47	52	61	68	64	59						
	47	2	* *	29	25	*	*	* 45	42	40	33	30	* 51	54	52	46	40	* 51	58	60	53	47	* 51	59	65	59	53	* 47	58	67	66	60										
6-150	212	22	49	51	52	59	48	45	57	60	61	63	53	48	62	63	65	65	64	51	64	65	67	67	58	54	67	70	72	73	64	60	68	71	73	73	71	61				
	189	17	47	48	48	54	44	40	58	59	60	61	51	46	61	62	63	62	62	50	63	65	66	66	57	54	65	67	68	68	59	56	67	70	70	70	62	60				
	142	10	* 42	40	46	35	31	56	55	53	53	44	39	59	59	59	58	50	47	61	62	61	61	53	51	62	64	63	63	55	53	63	66	67	66	59	57					
	94	5	* *	29	32	*	*	50	48	47	46	38	34	55	54	53	52	45	43	56	57	57	55	49	48	56	58	59	58	52	50	56	59	63	66	58	56					
	47	2	* *	*	*	*	*	* 43	41	39	33	31	* 47	53	52	55	43	* 48	56	59	52	48	* 48	58	64	58	53	* 48	58	68	65	60										
7-180	307	2	52	55	62	59	51	48	56	58	61	59	52	48	60	61	64	62	57	54	65	65	68	66	61	59	68	68	70	68	63	61	70	70	71	69	65	63				
	260	2	50	51	56	53	46	42	54	55	56	54	49	44	60	59	62	60	55	52	65	64	66	64	60	57	66	67	68	66	62	59	68	70	72	69	66	63				
	158	2	46	39	41	38	29	22	52	50	52	50	45	41	57	57	57	56	52	49	58	60	61	59	55	53	59	62	64	61	58	56	60	63	67	65	62	59				
	106	2	* *	30	26	*	*	49	46	47	45	41	36	53	54	55	52	48	46	53	56	58	56	52	50	58	56	60	59	55	54	54	57	59	61	59	59					
	52	2	* *	*	*	*	*	* 41	41	38	34	30	* 47	47	46	45	43	* 48	51	49	49	47	* 48	52	52	51	51	* 48	54	55	55	56	* 48	54	55	55	56					
8-200	378	7	52	53	59	58	51	44	57	60	62	60	52	47	61	63	64	63	57	53	65	65	66	65	60	56	66	66	68	67	62	59	69	70	71	70	66	63				
	330	5	51	51	56	56	48	40	55	58	59	57	50	45	59	61	62	61	55	52	63	63	65	64	59	56	65	65	66	66	61	59	67	69	70	69	65	62				
	283	5	49	48	51	50	42	32	55	57	57	56	49	47	59	60	61	60	54	51	62	63	64	63	58	55	64	65	66	65	60	57	66	68	69	68	63	61				
	189	2	* 38	40	38	29	*	51	50	51	49	42	40	56	56	56	54	50	47	59	60	59	58	54	52	60	62	62	60	56	55	60	64	66	65	60	58					
	83	2	* *	*	*	*	*	* 44	42	40	37	34	* 50	50	48	44	40	48	52	54	53	49	47	48	51	56	64	52	52	48	51	57	58	57	57							
10-250	637	2	51	53	59	59	54	51	62	63	64	64	58	54	65	67	68	67	61	57	67	69	70	70	64	60	74	71	72	72	67	63	71	75	75	75	71	67				
	519	2	48	47	52	52	47	43	59	61	60	59	54	49	62	64	64	64	58	54	66	67	67	67	62	58	68	70	69	70	65	61	69	73	72	73	69	66				
	*389	2	* 41	45	44	38	33	55	57	55	54	49	43	61	61	61	60	55	52	64	65	64	64	59	56	65	68	66	66	62	59	66	69	70	69	67	63					
	260	2	* *	31	28	*	*	53	51	50	47	44	40	57	58	56	56	52	49	59	61	60	60	56	55	60	62	62	62	59	56	59	62	65	66	62	60					
	130	2	* *	*	*	*	*	* 45	43	42	38	34	47	49	50	50	58	44	47	49	52	52	54	51	47	48	53	55	57	56	48	49	55	58	60	60						
12-315	944	2	57	57	62	61	56	53	64	65	66	66	60	55	67	68	69	70	64	59	69	70	72	72	66	61	71	71	73	74	68	63	74	75	76	78	73	69				
	755	2	52	49	54	53	48	44	61	61	61	61	55	49	65	65	65	65	59	54	68	68	69	69	64	59	69	70	70	72	66	62	71	73	74	74	70	67				
	566	2	47	43	46	44	38	34	57	57	56	55	49	44	62	62	62	62	56	52	65	65	65	66	60	57	66	68	67	68	63	60	69	71	72	71	68	64				
	378	2	44	36	36	33	28	*	54	53	52	51	45	40	60	59	58	58	53	50	62	63	62	62	58	54	63	64	65	64	61	57	63	66	68	68	65	62				
	189	2	* *	*	*	*	*	48	47	46	44	39	36	51	51	52	52	49	45	51	52	55	56	55	52	51	51	56	59	59	58	51	51	57	60	63	64					
14-355	1274	2	60	59	66	64	60	54	66	66	69	69	63	57	70	68	71	70	65	59	72	71	73	72	73	65	74	72	74	74	69	67	77	76	77	77	73	70				
	991	2	54	55	58	55	51	44	63	61	62	62	56	50	67	65	66	65	60	59	70	68	68	68	63	63	71	70	70	70	65	64	74	73	74	73	70	68				
	543	2	48	43	48	46	41	33	58	55	55	54	49	43	63	61	61	60	55	55	66	64	64	63	60	59	68	67	67	66	63	61	69	69	71	69	66	64				
	496	2	* 35	36	32	27	*	53	51	50	48	44	40	59	57	56	56	53	51	60	60	60	59	56	54	62	62	63	62	59	57	63	64	66	66	63	61					
	248	2	* *	*	*	*	*	49	45	44	43	40	37	52	50	51	50	48	45	51	50	54	54	53	51	54	53	56	57	56	55	54	54	58	60	60	60					
16-400	1652	2	60	59	66	64	60	54	65	65	70	70	64	58	71	69	72	72	66	59	73	72	73	74	68	64	74	73	75	75	70	66	77	76	77	78	73	70				
	1322	2	56	54	56	58	54	48	64	62	64	65	58	53	67	66	67	66	61	56	70	69	70	69	64	61	72	71	72	71	67	63	76	75	75	75	71	68				
	991	2	50	46	51	49	44	38	59	57	58	57	51	46	64																											

Discharge sound

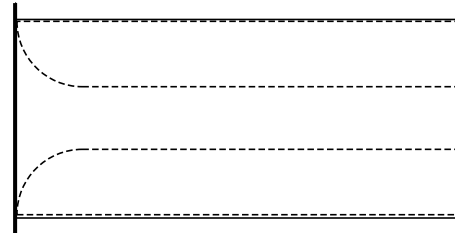
Radiated Sound Power Levels

Terminal Size	Air Flow l/s	Min. inlet ΔPs Pa	Fan and 100% Primary Air- Sound Power Octave Bands @ Inlet Pressure Shown																																				
			Min. ΔPs OBCF -Hz.					125 Pa. ΔPs OBCF -Hz.					250Pa ΔPs OBCF -Hz.					375Pa ΔPs OBCF -Hz.					500Pa ΔPs OBCF -Hz.					750Pa ΔPs OBCF -Hz.											
			125	250	500	1k	2k	4k	125	250	500	1k	2k	4k	125	250	500	1k	2k	4k	125	250	500	1k	2k	4k	125	250	500	1k	2k	4k	125	250	500	1k	2k	4k	
4-100	94	27	*	36	33	32	*	*	*	39	37	38	29	29	49	46	43	37	30	29	53	52	47	40	32	31	53	53	50	42	33	33	54	55	53	47	37	37	
	71	15	*	35	29	31	*	*	*	40	36	30	25	23	47	46	40	34	28	26	49	50	47	39	31	30	47	48	48	43	34	32	48	48	48	50	40	37	
	47	7	*	*	*	*	*	*	*	37	32	27	*	*	*	43	42	34	27	23	*	44	45	41	32	29	*	43	46	46	36	32	*	42	44	51	43	38	
	35	2	*	*	*	*	*	*	*	37	31	26	*	*	*	41	43	37	29	24	*	42	45	42	32	29	49	38	42	45	40	33	*	36	41	48	44	40	
	24	2	*	*	*	*	*	*	*	37	38	30	*	*	*	36	41	40	32	27	*	35	40	43	38	31	*	34	38	40	38	33	*	32	36	37	35	37	
5-125	142	10	47	38	32	32	30	27	50	43	37	37	35	31	54	46	44	37	35	31	57	49	47	39	38	33	59	52	49	40	39	35	59	55	53	43	43	39	
	118	7	*	35	31	25	23	*	50	39	36	29	28	25	54	45	42	33	32	28	55	48	45	35	35	30	56	51	48	37	37	32	57	53	51	42	41	35	
	94	5	*	*	*	*	*	*	50	38	34	27	26	*	52	43	39	30	30	25	52	45	43	32	32	28	53	48	46	36	36	30	53	48	48	44	41	34	
	59	2	*	*	*	*	*	*	*	43	29	21	*	*	*	48	40	38	28	27	*	48	42	42	34	33	27	49	42	44	39	38	29	49	42	44	47	46	37
	47	2	*	*	*	*	*	*	*	33	29	*	*	*	*	39	38	28	26	*	*	40	42	36	34	26	46	40	43	43	41	31	47	41	43	47	46	37	
6-150	212	22	48	44	37	35	30	28	48	47	40	38	32	29	56	50	45	40	34	31	59	53	48	44	36	33	61	55	50	43	39	37	64	58	54	46	42	41	
	189	17	*	42	33	33	28	26	49	46	39	35	30	28	56	49	44	38	32	29	59	52	47	40	36	33	62	54	49	42	39	36	65	58	54	45	42	41	
	142	10	*	34	27	26	*	*	47	42	35	29	25	*	55	46	40	33	30	28	58	49	44	36	33	32	59	51	47	38	36	34	60	55	51	43	39	39	
	94	5	*	*	*	*	*	*	47	36	30	24	*	*	53	43	38	30	29	28	53	45	43	32	31	30	53	47	44	36	32	32	55	49	46	43	37	37	
	47	2	*	*	*	*	*	*	*	34	27	*	*	*	*	35	38	33	29	24	45	39	40	37	31	28	47	39	40	42	37	32	46	40	40	46	44	38	
7-180	307	2	48	45	46	38	31	30	49	48	45	37	31	29	54	50	47	40	34	32	60	54	50	44	37	35	64	58	54	48	40	38	67	63	58	51	44	43	
	260	2	49	43	41	33	27	25	48	44	40	32	28	26	55	49	45	38	32	30	61	54	49	43	36	33	64	58	52	45	38	36	65	61	57	50	42	40	
	158	2	*	*	*	*	*	*	*	40	35	29	24	*	58	48	42	36	30	28	57	51	46	40	32	30	57	52	48	42	34	32	57	53	50	47	39	38	
	106	2	*	*	*	*	*	*	*	39	33	28	*	*	50	45	40	34	28	25	52	47	43	38	31	29	51	47	43	41	33	31	52	48	45	42	35	36	
	52	2	*	*	*	*	*	*	*	28	25	*	*	*	*	37	33	32	27	24	*	36	32	31	27	26	*	38	35	34	29	29	*	38	35	35	32	36	
8-200	378	7	51	46	40	33	31	28	55	48	44	35	33	29	57	51	48	38	36	32	61	54	50	41	40	35	64	56	53	43	43	38	66	58	55	46	47	41	
	330	5	50	43	37	31	29	25	51	47	42	33	31	28	57	51	47	37	36	32	61	53	50	40	39	35	63	55	51	42	41	37	64	59	56	45	44	40	
	283	5	*	39	33	29	26	*	50	45	40	31	30	26	57	49	45	35	34	31	60	53	49	38	38	33	61	55	51	40	40	36	63	59	56	46	43	40	
	189	2	*	35	26	*	*	*	49	41	36	28	27	24	54	47	41	32	31	30	57	52	46	35	34	32	57	52	47	37	36	34	59	54	51	41	40	39	
	83	2	*	*	*	*	*	*	*	36	31	23	23	*	48	41	35	29	29	27	48	42	37	31	31	30	49	42	39	33	33	33	49	42	40	35	37	38	
10-250	637	2	53	42	41	36	30	23	55	47	46	39	34	29	58	53	50	44	38	34	60	56	53	48	42	37	63	57	54	50	46	41	65	61	57	54	48	45	
	519	2	51	37	35	30	25	*	53	46	42	35	31	27	55	50	47	41	35	31	60	54	50	45	39	36	61	66	61	47	42	39	64	61	55	51	45	43	
	389	2	*	33	29	25	*	*	50	43	38	32	29	25	55	48	43	38	33	30	58	52	47	42	37	34	59	54	49	44	38	36	61	57	53	49	43	40	
	260	2	*	*	*	*	*	*	*	38	33	29	25	*	51	44	38	34	30	28	53	47	42	38	32	34	56	50	45	41	36	33	57	52	48	45	39	37	
	130	2	*	*	*	*	*	*	*	35	29	26	*	*	*	39	33	31	28	*	*	40	36	34	31	29	*	40	36	36	33	32	48	43	40	40	36	36	
12-315	944	2	54	50	49	44	37	33	58	55	51	46	39	35	61	59	53	49	43	37	64	61	56	52	45	41	65	62	58	55	48	44	68	66	61	58	51	49	
	755	2	52	45	41	36	30	27	56	52	45	40	34	30	59	56	49	46	38	35	61	58	53	49	42	39	62	60	55	51	44	42	65	64	58	55	48	46	
	566	2	47	39	33	29	24	*	52	48	40	36	30	27	55	52	45	41	34	32	58	55	49	45	38	36	60	58	51	48	41	39	61	61	55	52	45	44	
	378	2	*	*	*	*	*	*	50	41	34	30	26	*	52	48	41	37	31	30	53	52	45	42	35	33	54	53	47	44	37	36	56	55	50	48	42	42	
	189	2	*	*	*	*	*	*	*	37	31	28	*	*	*	42	36	33	29	28	47	45	40	37	32	31	48	47	42	40	35	34	47	44	40	43	40	42	
14-355	1274	2	57	54	50	46	42	36	59	57	52	48	44	38	61	60	54	49	46	38	64	63	56	51	49	45	65	66	59	53	50	48	69	69	63	57	53	51	
	991	2	54	48	44	39	35	30	56	53	45	40	37	31	61	57	50	44	41	38	63	61	55	48	44	43	64	63	57	50	46	44	66	66	60	55	50	48	
	543	2	46	40	35	30	28	*	51	48	40	33	31	27	57	55	48	40	36	35	60	58	52	45	40	39	60	60	53	47	43	41	62	63	57	52	47	45	
	496	2	*	32	24	*	*	*	49	46	38	31	28	24	52	51	43	37	33	31	54	55	47	41	37	35	55	58	50	45	40	38	56	58	52	48	43	42	
	248	2	*	*	*	*	*	*	*	39	31	27	24	*	*	45	38	32	30	28	*	45	39	35	31	32	48	48	42	39	37	36	49	49	44	42	40	42	
16-400	1652	2	57	57	53	49	43	36	59	60	55	50	45	38	63	62	57	52	46	37	66	65	59	54	48	43	68	68	61	56	50	48	71	71	64	59	53	48	
	1322	2	54	51	49	43	37	32	59	55	50	44	38	32	62	59	53	47	41	35	65	63	57	50	44	39	66	65	59	52	46	41	68	69	62	56	50	46	
	991	2	49	44	41	34	28	*	54	50	44	37	32	28	59	57	50	42	37	32	61	60	53	45	40	35	63	63	56	49	43	39	64	65	58	53	47	44	
	661	2	*	34	31	*	*	*	50	47	39	32	29	26	54	53	46	38	35	31	56	57	49	42	38	35	57	59	51	45	40	38	58	61	54	49	44	42	
	330	2	*	*	*																																		

Secondary Attenuators



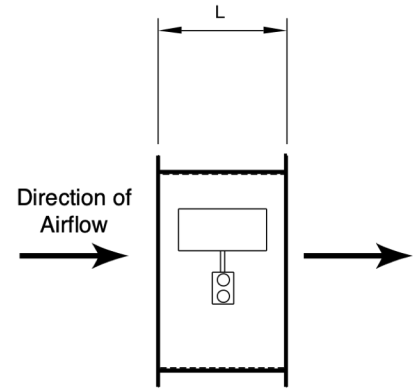
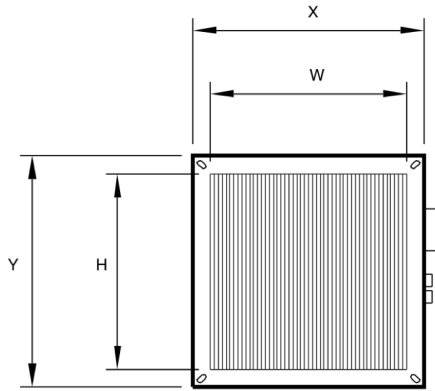
Terminal Size	W mm	H mm	X mm	Y mm	L mm	Wgt kg
4-100	300	200	330	230	600	12.00
4-100	300	200	330	230	900	16.00
4-100	300	200	330	230	1200	12.00
5-125	300	200	330	230	600	12.00
5-125	300	200	330	230	900	16.00
5-125	300	200	330	230	1200	20.00
5.5-140	300	200	330	230	600	12.00
5.5-140	300	200	330	230	900	16.00
5.5-140	300	200	330	230	1200	20.00
6-150	300	200	330	230	600	12.00
6-150	300	200	330	230	900	16.00
6-150	300	200	330	230	1200	20.00
6.5-160	300	200	330	330	600	15.00
6.5-160	300	300	330	330	900	19.00
6.5-160	300	300	330	330	1200	24.00
7-180	300	300	330	330	600	15.00
7-180	300	300	330	330	900	19.00
7-180	300	300	330	330	1200	24.00
8-200	300	300	330	330	600	15.00
8-200	300	300	330	330	900	19.00
8-200	300	300	330	330	1200	24.00
10-250	350	300	380	330	600	16.00
10-250	350	300	380	330	900	21.00
10-250	350	300	380	330	1200	26.00
12-315	450	450	480	480	600	24.00
12-315	450	450	480	480	900	31.00
12-315	450	450	480	480	1200	38.00
14-355	450	450	480	480	600	24.00
14-355	450	450	480	480	900	31.00
14-355	450	450	480	480	1200	38.00
16-400	450	450	480	480	600	24.00
16-400	450	450	480	480	900	31.00
16-400	450	450	480	480	1200	38.00



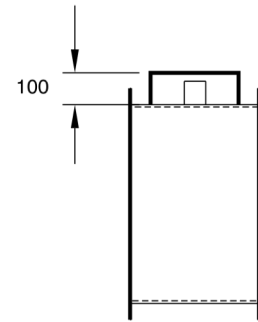
Acoustic Performance Data – Secondary Attenuator Static Insertion Loss dB

Terminal size	Air vol. l/s.	Air vol. m3/h	Press. drop Pa.	width mm.	height mm.	length mm.	O.B.C.F.-Hz					
							125	250	500	1k	2k	4k
4-100	24	86	neg.	300	200	600	6	10	17	22	18	16
4-100	94	338	60	300	200	600	6	10	17	22	18	16
4-100	24	86	neg.	300	200	900	8	14	26	33	27	22
4-100	94	338	65	300	200	900	8	14	26	33	27	22
4-100	24	86	neg.	300	200	1200	9	18	34	43	36	27
4-100	94	338	70	300	200	1200	9	18	34	43	36	27
5-125	47	169	neg.	300	200	600	6	10	17	22	18	16
5-125	142	511	60	300	200	600	6	10	17	22	18	16
5-125	47	169	neg.	300	200	900	8	14	26	33	27	22
5-125	142	511	65	300	200	900	8	14	26	33	27	22
5-125	47	169	neg.	300	200	1200	9	18	34	43	36	27
5-125	142	511	70	300	200	1200	9	18	34	43	36	27
6-150	45	162	neg.	300	200	600	6	10	17	22	18	16
6-150	210	756	60	300	200	600	6	10	17	22	18	16
6-150	45	162	neg.	300	200	900	8	14	26	33	27	22
6-150	210	756	65	300	200	900	8	14	26	33	27	22
6-150	45	162	neg.	300	200	1200	9	18	34	43	36	27
6-150	210	756	70	300	200	1200	9	18	34	43	36	27
8-200	80	288	neg.	300	300	600	6	10	17	22	18	16
8-200	375	1350	75	300	300	600	6	10	17	22	18	16
8-200	80	288	neg.	300	300	900	8	14	26	33	27	22
8-200	375	1350	80	300	300	900	8	14	26	33	27	22
8-200	80	288	neg.	300	300	1200	9	18	34	43	36	27
8-200	375	1350	85	300	300	1200	9	18	34	43	36	27
10-250	130	468	neg.	350	300	600	6	7	13	17	13	8
10-250	635	2286	60	350	300	600	6	7	13	17	13	8
10-250	130	468	neg.	350	300	900	9	12	20	25	19	12
10-250	635	2286	70	350	300	900	9	12	20	25	19	12
10-250	130	468	neg.	350	300	1200	12	14	26	34	26	15
10-250	635	2286	80	350	300	1200	12	14	26	34	26	15
12-315	190	684	neg.	450	450	600	2	5	8	10	7	4
12-315	945	3402	60	450	450	600	2	5	8	10	7	4
12-315	190	684	neg.	450	450	900	4	7	12	15	11	5
12-315	945	3402	65	450	450	900	4	7	12	15	11	5
12-315	190	684	neg.	450	450	1200	5	10	16	19	14	7
12-315	945	3402	70	450	450	1200	5	10	16	19	14	7
14-355	235	846	neg.	450	450	600	2	5	8	10	7	4
14-355	1275	4590	60	450	450	600	2	5	8	10	7	4
14-355	235	846	neg.	450	450	900	4	7	12	15	11	5
14-355	1275	4590	65	450	450	900	4	7	12	15	11	5
14-355	235	846	neg.	450	450	1200	5	10	16	19	14	7
14-355	1275	4590	70	450	450	1200	5	10	16	19	14	7
16-400	330	1188	neg.	450	450	600	2	5	8	10	7	4
16-400	1652	2549	60	450	450	600	2	5	8	10	7	4
16-400	330	1188	neg.	450	450	900	4	7	12	15	11	5
16-400	1652	2549	65	450	450	900	4	7	12	15	11	5
16-400	330	1188	neg.	450	450	1200	5	10	16	19	14	7
16-400	1652	2549	70	450	450	1200	5	10	16	19	14	7

Low Pressure Hot Water Re-heat Batteries



Terminal Size	W mm	H mm	L mm	X mm	Y mm	Wgt kg
4-100	300	200	200	370	270	10
5-125	300	200	200	370	270	10
5.5-140	300	200	200	370	270	10
6-150	300	200	200	370	270	10
6.5-160	300	200	200	370	370	10
7-180	300	300	200	370	370	13
8-200	300	300	200	370	370	13
10-250	350	200	200	420	370	14
12-315	450	450	200	520	520	15
14-355	450	450	200	520	520	15
16-400	450	450	200	520	520	15
2x16-600x400	750	450	200	820	520	20



Re-Heat Battery

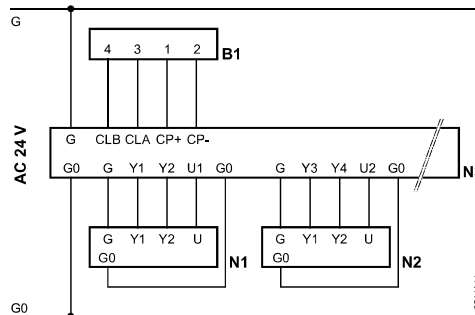
Performance 82°C Flow, 71°C Return, 10 fpi

Terminal Size	Air Vol. l/s	Air Vol. m ³ /h	Dimensions Width mm	Dimensions Height mm	Face Vel m/s	Air On C	1 Row Duty kW	Air Off C	Water Pd KPa	Water kg/s	Air Pd Pa	2 Row Duty kW	Air Off C	Water Pd kPa	Water kg/s	Air Pd Pa
4-100	24	87	300	200	0.40	16	0.8	43.6	0.7	17.3	1	1.3	60	3.0	28.1	2
4-100	47	170	300	200	0.78	16	1.6	43.4	2.4	34.6	4	2.4	59	1.7	52.6	7
4-100	71	256	300	200	1.18	16	2.2	42.0	4.6	47.6	8	3.5	57	3.4	75.8	13
4-100	94	338	300	200	1.57	16	2.7	46.1	6.7	58.4	12	4.4	55	5.0	95.2	21
5-125	47	170	300	200	0.78	16	2.2	42.0	4.6	47.6	8	3.5	57	3.4	75.8	13
5-125	94	338	300	200	1.57	16	2.7	46.1	6.7	58.4	12	4.4	55	5.0	95.2	21
5-125	118	425	300	200	1.97	16	3.2	38.9	9.0	69.3	18	5.2	53	6.9	112.6	32
5-125	142	511	300	200	2.32	16	3.4	35.6	1.8	73.6	25	6.0	51	8.9	129.9	43
5.5-140	46	166	300	200	0.77	16	1.5	43.5	2.8	32.9	4	2.7	59	2.0	58.4	64
5.5-140	92	331	300	200	1.53	16	2.7	40.2	7.9	57.6	12	4.3	55	2.9	92.9	21
5.5-140	139	500	300	200	2.32	16	3.3	35.8	2.1	71.6	24	5.7	50	4.0	123.2	42
5.5-140	185	666	300	200	3.08	16	4.0	34.0	3.0	86.6	39	7.0	47	5.9	151.5	68
6-150	45	162	300	200	0.75	16	1.5	43.4	2.2	32.5	4	2.4	60	10.0	51.9	6
6-150	115	414	300	200	1.92	16	3.1	38.6	6.7	67.1	17	5.1	53	6.7	110.4	30
6-150	185	666	300	200	3.08	16	4.0	33.9	2.5	86.6	39	6.7	46	4.5	145.0	68
6-150	210	756	300	200	3.50	16	4.5	33.6	3.1	97.4	48	7.4	45	5.5	160.2	84
6.5-160	60	216	300	300	0.67	16	2.0	44	5.7	43.3	3	3.1	60	4.0	68.2	5
6.5-160	120	432	300	300	1.33	16	3.5	40.5	2.7	75.8	9.3	5.8	56	4.7	124.9	16
6.5-160	181	652	300	300	2.01	16	4.7	37.7	4.7	102.6	19	8.0	53	8.4	172.1	33
6.5-160	241	868	300	300	2.68	16	5.8	36	6.8	124.7	31	9.8	42	9.8	213.2	53
7-180	76	274	300	300	0.84	16	2.6	44	8.7	55.4	4.3	4.0	60	6.0	86.1	7.5
7-180	153	551	300	300	1.70	16	4.2	38.9	3.8	91.3	14	7.0	54	6.6	151.5	25
7-180	229	824	300	300	2.54	16	5.6	36.2	6.4	120.6	28	9.3	48	6.7	200.4	49
7-180	305	1098	300	300	3.39	16	6.9	39.7	9.4	149.1	46	11.6	48	10.2	251.1	80
8-200	80	288	300	300	0.89	16	2.7	43.9	9.6	58.4	5	4.2	60	6.6	90.9	8
8-200	190	684	300	300	2.11	16	4.9	31.4	5.0	106.1	20	8.2	52	9.0	177.5	36
8-200	280	1008	300	300	3.11	16	6.5	35.2	8.4	140.7	39	6.9	48	9.0	149.4	69
8-200	375	1350	300	300	4.17	16	7.5	32.6	5.0	162.3	65	11.3	41	7.2	244.6	113
10-250	130	468	350	300	1.24	16	3.7	39.9	3.0	80.1	11	6.1	55	5.2	132.0	19
10-250	350	1260	350	300	3.33	16	7.2	33.0	4.5	155.8	57	10.7	41	6.5	231.6	101
10-250	520	1872	350	300	4.95	16	8.8	30.0	6.7	190.5	113	15.4	41	10.9	333.3	197
10-250	635	2236	350	300	6.05	16	9.0	27.9	7.0	194.8	156	16.1	37	11.9	348.5	273
12-315	190	684	450	450	0.94	16	5.7	40.8	7.8	123.4	10	9.1	56	7.3	197.0	18
12-315	565	2034	450	450	2.79	16	11.5	33.0	8.1	249.6	65	19.6	45	15.1	425.3	114
12-315	750	2700	450	450	3.70	16	13.4	30.8	10.8	289.2	105	21.7	40	16.1	469.9	185
12-315	945	3402	450	450	4.67	16	12.8	27.2	7.0	276.8	156	22.9	36	17.8	496.1	273
14-355	235	846	450	450	1.16	16	7.1	41.1	5.7	154.5	9	10.2	52	7.0	220.6	16
14-355	800	2680	450	450	3.95	16	15.0	32.7	9.7	321.2	64	25.6	45	22.2	553.9	112
14-355	1035	3726	450	450	5.11	16	17.6	30.1	13.1	380.5	112	30.8	41	31.7	666.0	196
14-355	1275	4590	450	450	6.30	16	18.0	27.7	13.8	390.5	160	32.3	37	34.7	699.6	279
16-400	320	1152	450	450	1.58	16	8.3	37.4	5.6	178.8	12	13.6	51	9.0	293.9	22
16-400	780	2808	450	450	3.85	16	12.3	29.0	7.1	265.6	57	26.0	44	25.0	562.8	99
16-400	1240	4464	450	450	6.12	16	19.0	28.6	14.7	409.1	129	33.4	38	40.4	722.3	218
16-400	1700	6120	450	450	8.40	16	19.5	25.5	15.7	423.2	213	35.6	33	45.8	771.2	372
600 x 400	1890	6804	710	450	5.92	16	13.3	21.8	7.6	288.5	118	25.0	27	25.2	541.1	207
600 x 400	2360	8496	710	450	7.39	16	13.5	20.7	7.8	291.6	173	25.8	25	24.0	558.7	303
600 x 400	3300	11880	710	450	10.33	16	13.6	19.4	8.0	295.2	305	26.4	23	25.1	572.3	535
600 x 400	3775	13590	710	450	11.82	16	13.7	19.0	8.0	296.3	384	26.6	22	25.5	576.8	623

Controller

Operating mode "3P"

Supply / extract air control

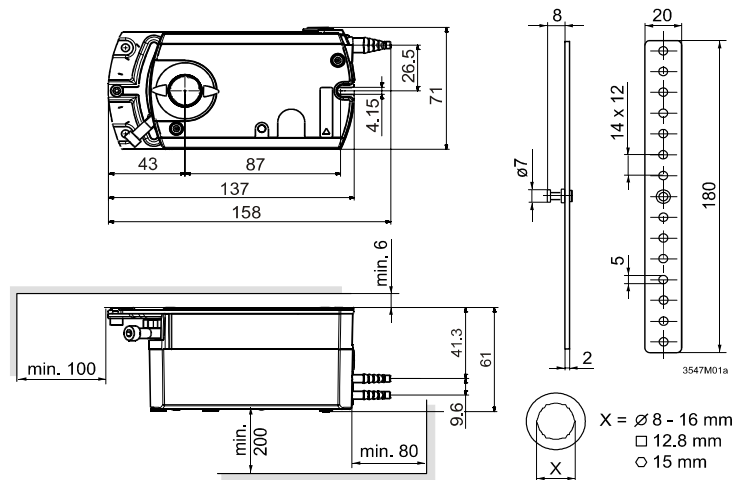


- N1** GDB181.1E/3 or GLB181.1/E3 –supply air–
- N2** GDB181.1E/3 or GLB181.1/E3 –extract air–
- N3** Room temp. controller DESIGO™ RXC31.1
- B1** DESIGO™-room unit, e.g. QAX32.1



- The operating voltage fed to terminals G and G0 must comply with the requirements for SELV or PELV
- Use safety isolating transformers with double insulation conforming to EN 61558; they must be suited for 100 % of operating time

Dimensions



Measurements in mm



Single Duct Compact VAV Terminal Unit **VAV 3000 Grand-RX**



• +90 0850 303 4766



• info@gerhman.com



• gerhman.com