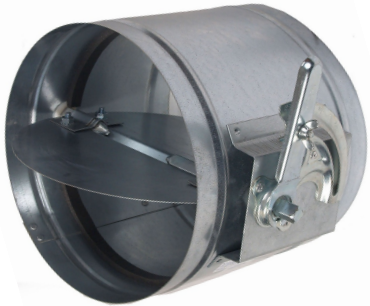




Air Flow Control
**Blue-R Round Volume Control
Dampers**



At Gerhman we are driven by a strong desire to continuously generate improvements. We do that by developing products and systems that are easy to use and energy efficient, together with industry-leading knowledge, support, logistics and efficient availability.

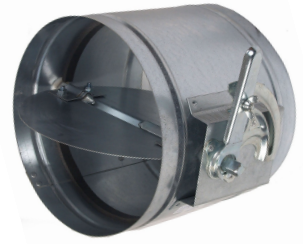


gerhman.com

Air Flow Control

Blue-R

Round Volume Control Dampers



Round volume control dampers type 'Blue-R', are used for air volume and pressure control in round ducted HVAC system. They are made out of galvanized steel sheet. Damper can be operated manually or equipped with electric actuator (24V or 230V) with or without position indicator.

Design

- Blue-R units are made from galvanised sheet steel casing and galvanised blades.
- Available in stainless steel and aluminium upon on request.
- Tightness class version acc to EN1751 (Optional)
- Open/close, continuous, fast acting and spring return actuators options
- Operation: $\Delta p_{max} = 1000 \text{ Pa}$; $t_{max} = 200 \text{ }^\circ\text{C}$

Tightness class versions acc. to EN 1751

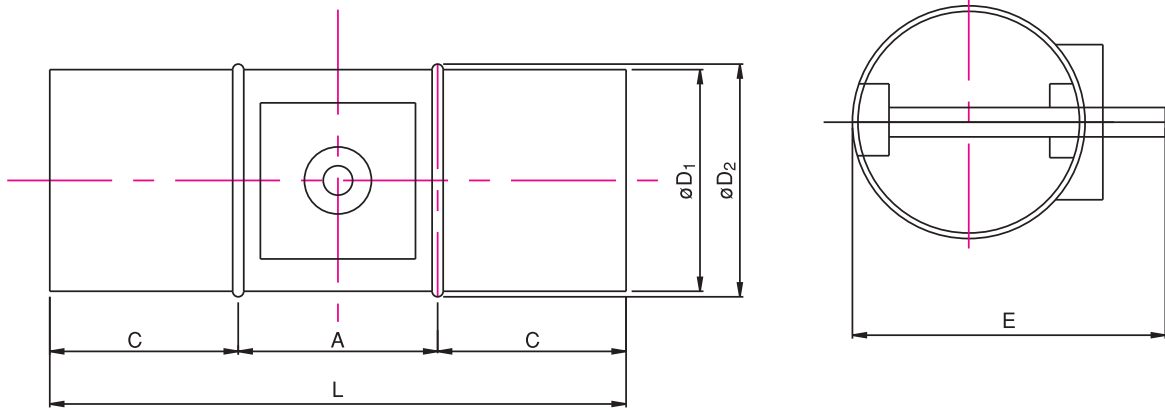
- Casing tightness class C & blade tightness class 4
- All the gaskets are manufactured from black rubber.
- The field of application is offices, hotel rooms or meeting rooms, health care premises, residentials,
- Operation: $\Delta p_{max} = 1000 \text{ Pa}$; $t_{max} = 100 \text{ }^\circ\text{C}$



(Order code: **Blue-RC4**)

Dimensions

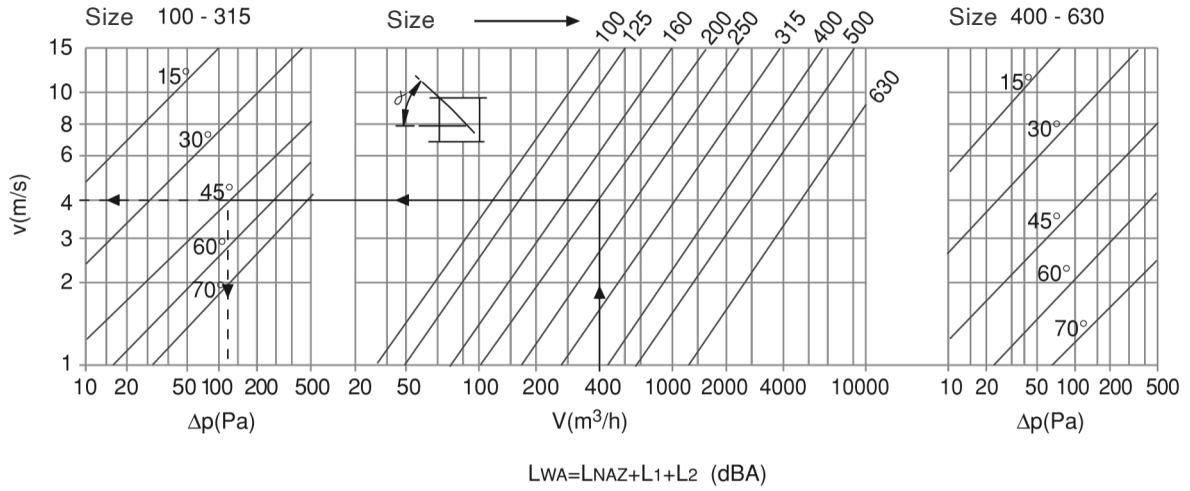
Blue-R



Size	$\varnothing D_1$	$\varnothing D_2$	A	C	L	E
100	98	104	100	40	200	147
125	123	128	100	40	200	173
160	158	164	100	40	200	207
200	198	204	150	40	200	247
250	248	254	150	40	300	297
315	313	318	170	50	365	362
400	398	403	240	50	450	449
500	498	502	240	80	550	548
630	628	632	240	80	680	678
710	708	712	240	80	760	758

Performance Data

Blue-R



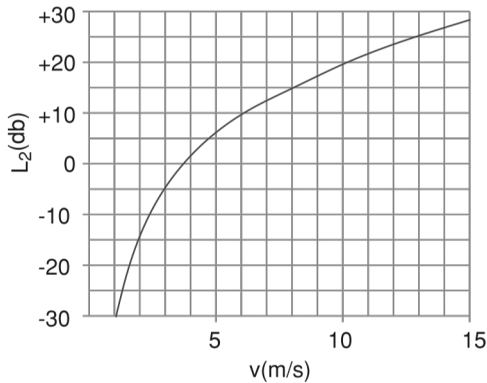
Sound Level / Blade Angle (LNAZ)

Size	α	Frekans (Hz)						
		125	250	500	1000	2000	4000	8000
100 ↓ 315	15	37	26	22	18	11	11	10
	30	43	32	28	24	19	19	18
	45	48	43	38	34	31	30	31
	60	54	51	48	46	45	43	42
	75	58	55	54	52	52	51	50
400 ↓ 630	15	39	29	24	20	14	14	12
	30	46	35	31	27	22	22	21
	45	52	47	42	38	35	34	34
	60	59	56	53	51	50	48	47
	75	59	56	53	51	50	48	47

L1

Size	100	125	160	200	250	315	400	500	630
L1 (db)	-2	-1	0	+1	+2	+3	+4	+5	+6

L2



Actuator

Blue-RX (with electric actuator)

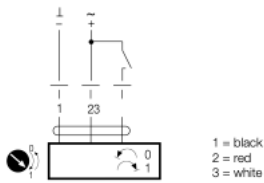


	0-10 V		2/3-point		Spring return "OPEN" and "CLOSED"		Spring return 0-10 V
	24 V AC/DC	230 V AC	24 V AC/DC	230 V AC	24 V AC/DC	230 V AC	24 V AC/DC
4 Nm	-	-	-	-	M21	M20	M23
5 Nm	M12	M16	M01	M02	-	-	-
10 Nm	M13	M17	M03	M04	M27	M29	M28
20 Nm	M14	M18	M05	M06	M25	M24	M22
40 Nm	M15	-	M07	M08	-	-	-

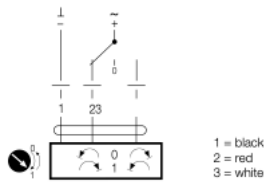
Wiring diagram

-open/close

AC/DC 24 V, open/close

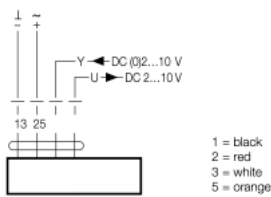


AC/DC 24 V, 3-point



-continuous

AC/DC 24 V, modulating



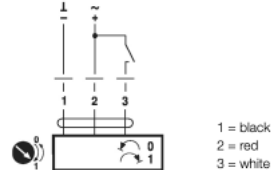
-spring return

AC/DC 24 V, open/close



-fast-acting

AC/DC 24 V, open/close





gerhman.com

Air Flow Control

Blue-R Round Volume Control Dampers



• +90 0850 303 4766



• info@gerhman.com



• gerhman.com