

Exhaust Access Panel

**Linea-Push**

At Gerhman we are driven by a strong desire to continuously generate improvements. We do that by developing products and systems that are easy to use and energy efficient, together with industry-leading knowledge, support, logistics and efficient availability.



[gerhman.com](https://gerhman.com)

## Exhaust Access Panel

### Linea-Push



Aluminum construction access panel have been designed to satisfy all exhaust applications. The grille core has an aluminum construction horizontal bar set with access panel.

#### Typical Applications

They can be mounted on the ceiling to exhaust the air with double frame with hinged opening and push-pull system for easy storage and replacement of the filter.

#### Ideal for

- Shopping centers
- Offices
- Residences

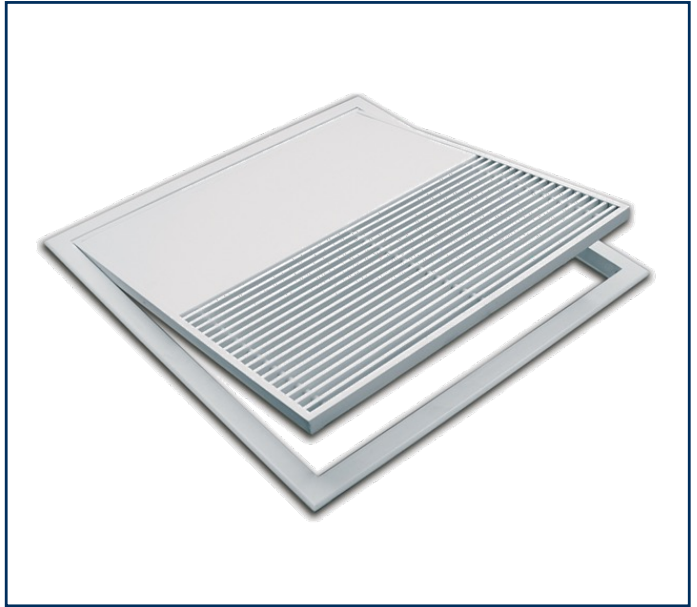
#### Installation

Installation is carried out by fixing the outer frame of the grille to the wall using screws or in support on structure for paneled ceilings.

## Types and sizes



Linea-Push



Linea-Push+

<b>Minimum Panel Size</b>	150x150
<b>Maximum Panel Size</b>	1200x1200

## Performance

Airflow l/s per m	Grille Size 1000 X....	Pressure Pa	Face Velocity m/s	NC
100	100	12	1,2	16
	150	6	0,8	<15
	200	4	0,6	<15
	250	2	0,5	<15
	300	1	0,4	<15
200	100	18	2,4	34
	150	8	1,7	15
	200	6	1,2	<15
	250	4	1	<15
	300	2	0,8	<15
300	100	30	3,7	40
	150	10	2,5	25
	200	8	1,9	<15
	250	6	1,5	<15
	300	3	1,2	<15
400	100	34	4,9	44
	150	12	3,3	31
	200	9	2,5	19
	250	7	2	<15
	300	4	1,6	<15
500	100	38	6,1	46
	150	14	4,2	36
	200	10	3,1	24
	250	8	2,5	<15
	300	6	2,1	<15



Exhaust Access Panel

**Linea-Push**



• +90 0850 303 4766



• [info@gerhman.com](mailto:info@gerhman.com)



• [gerhman.com](http://gerhman.com)